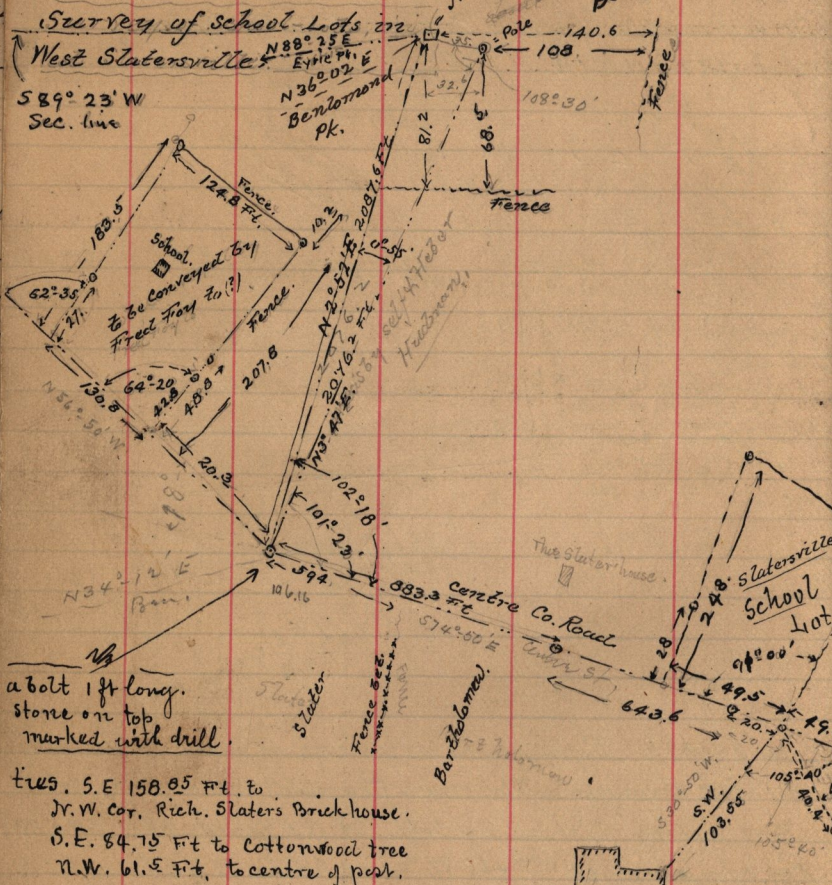


March 14th 1893.

N.W. Cor. Sec. 11. T. 6. N. R. 2. W.
See page 136 this part.
Book I. page 36 Field notes



a bolt 1 ft long, stone on top marked with drill.

- Lines. S. E. 158.05 Ft. to N.W. Cor. Rich. Slaters Brick house.
- S. E. 84.75 Ft to Cottonwood tree
- N.W. 61.5 Ft. to centre of post.

See Co. Road transit notes
 Book 7, Page 53
 plat Book
 page 109

N.E. 121.8 to S.W. Cor.
 Ida Wayment brick

March 24-1893

Description issued for Slatersville School, Lot as shown above. Pt N.W. 1/4 Sec. 11. T. 6. N. R. 2. W. Beg. at a point 2087.6 Ft. S 52° 52' W. and 1497.4 Ft S 74° 50' E. from N.W. Cor. sd 1/4 Sec. S 74° 50' E. 99. Ft. N 15° 10' E. 248. Ft N 74° 50' 33. Ft. S 52° 52' W. 248. Ft to beg. reserving at that part of Co. Road included in above.

S 60° 20' E. Obsty

Large Br. H. Slater